

provides both  
**left and right**  
**hand** facilities  
without the need  
to specify



*Image for illustration only*

### **DIMENSIONS AND EQUIPMENT**

To comply with Approved Document M of the Building Regulations BS 8300:2001 , a WC facility suitable for wheelchair users should have at least the dimensions, equipment and fittings shown in the layout drawing on page 4.

### **LAYOUT**

If a building contains more than one WC compartment for wheelchair users, the opportunity should be taken to provide both left-hand and right-hand transfer layouts. The Intacare Doc M Pack provides this facility in one standard pack without the need to specify right or left hand assemblies. Note: the drawing on page 6 illustrates a right handed layout, for lefthanded layouts this must be reversed.



## Close Coupled Doc M WC Pack (DM601WH)

### ▀ Pack Contents

#### WC SUITE

Close Coupled HO Pan

6ltr Close Coupled Cistern & Spatula Lever

Seat Ring and Hinges

#### BASIN

450mm Basin - 2 Tap Holes

1 1/4" Basin Waste

Lever Operated Sequential Basin Mixer Tap

Bottle Trap

Wall Fixing Brackets

Tap hole stopper

#### RAILS

600mm Support Rails (x 5)

Hinged Support Rail with Toilet Roll Holder (x 1)

#### ADDITIONAL MANDATORY ITEMS NOT INCLUDED

Alarm Pull Cord With Two Red Bangles, Shelf & Facility for Limb Storage

Mirror 400mm wide x 1000mm high fixed at a height of 800mm from the floor to the bottom edge

#### FIXING

It is essential that fixing instructions be followed, as the security of all items is vitally important. Walls onto which fittings are to be mounted must be suitable for the intended use of the applicable product. Appropriate fixings should be used which are suitable for the material of the fixing wall. For specialist fixings advise contact Fisher Fixings to ensure the correct fixings are used.

#### WC

Plugged and screwed to the floor (supplied)

#### Cistern

Plugged and screwed to the wall (supplied)

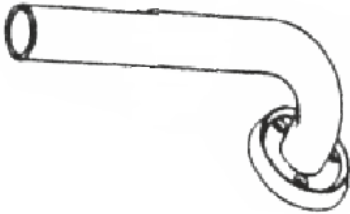
#### Basin

Mounted on brackets provided using suitable fixings (supplied)



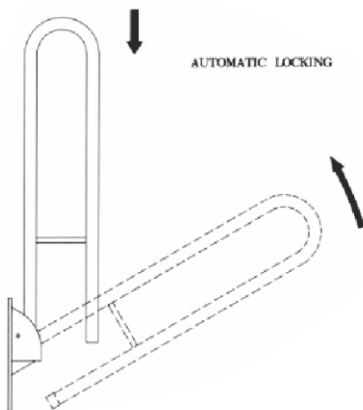
## Close Coupled Doc M WC Pack (DM601WH)

### GRAB RAILS



1. Ensure that the wall construction and fixings for the hinged support rails and grab rails are capable of resisting the horizontal and vertical loads exerted on them by the users. and there is no risk contacting with electrical cables.
2. Determine the position as detailed in the general arrangement drawing on page 6. Check alignment and mark the screw holes
3. Drill and plug the wall, using appropriate fixings (not supplied) for the wall structure. For specialist fixing advice contact Fisher Fixings to ensure that the correct fixings are used.
4. Secure the Rail into position.
5. Reposition the flange cover to conceal fixing screws.

### HINGED SUPPORT RAILS



Ensure that the wall construction and fixings for the hinged support rails and grab rails are capable of resisting the horizontal and vertical loads exerted on them by the users.

Offer the hinged arm to the wall at the correct height and location. Once sure of its position mark the fixing holes. Remove arm and drill and plug holes with appropriate fixings (not supplied) for the wall structure. For specialist fixing advice contact Fisher Fixings to ensure that the correct fixings are used.

Secure hinged arm to the wall.

### HOW TO RAISE THE HINGED SUPPORT RAIL

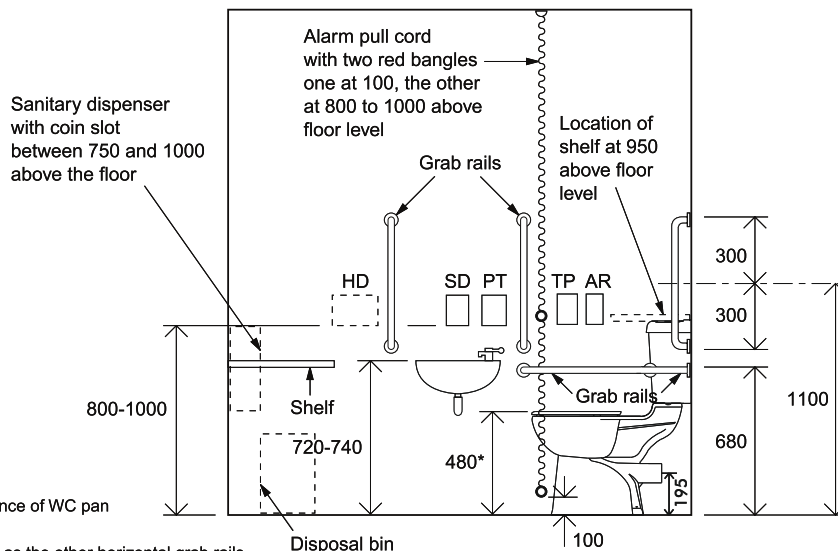
When not in use, the Hinged Support Rail is raised, leaving the facility clear for other users.

### HOW TO LOWER THE HINGED SUPPORT RAIL

To lower the unit from its upward/raised position, the Hinged Support Arm needs to be gently lifted from its locked status and then gently lowered into its horizontal position ready for use.



## Close Coupled Doc M WC Pack (DM601WH)

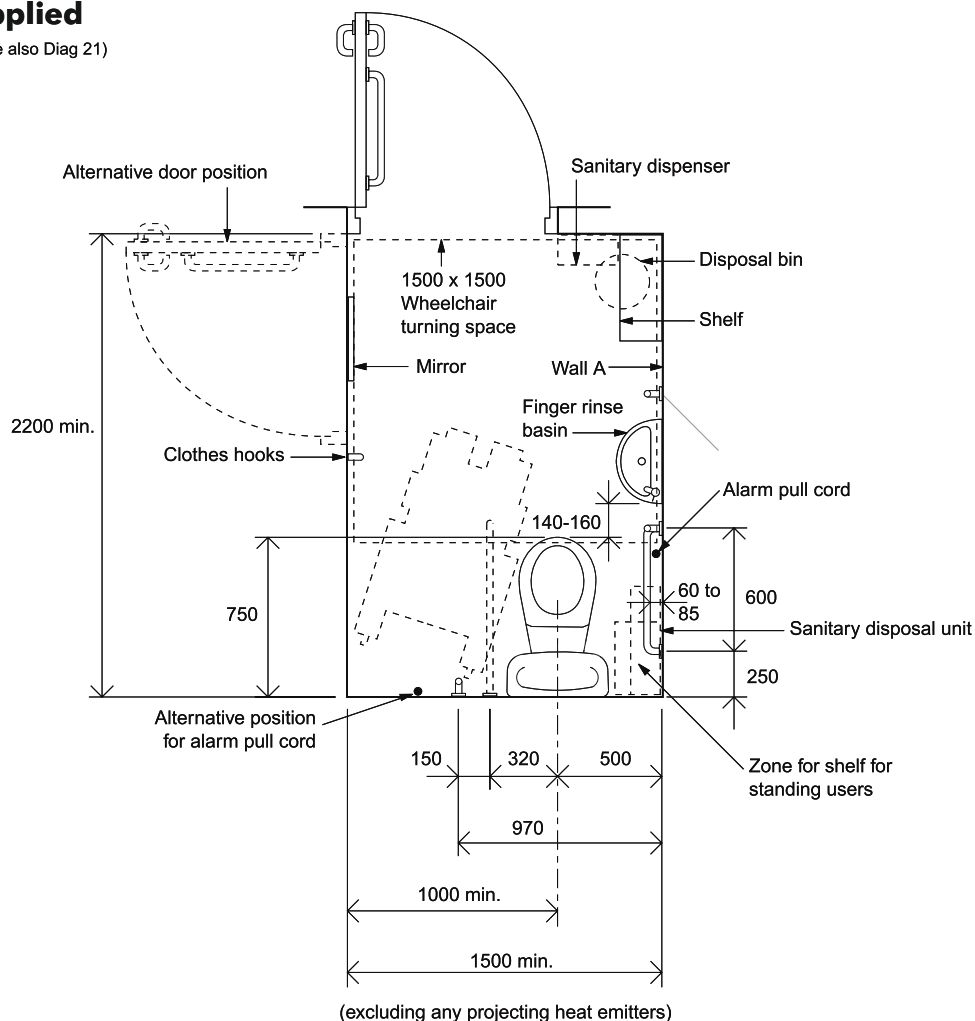


\*Height subject to manufacturing tolerance of WC pan

Height of drop-down rails to be the same as the other horizontal grab rails

### Additional Items - Not Supplied

- HD: Possible position for automatic hand dryer (see also Diag 21)
- SD: Soap dispenser
- PT: Paper towel dispenser
- AR: Alarm reset button
- TP: Toilet paper dispenser



Note  
Layout for right hand transfer to WC

