

provides both  
**left and right**  
**hand** facilities  
without the need  
to specify

## layout instructions

### DIMENSIONS AND EQUIPMENT

To comply with Approved Document M of the Building Regulations BS 8300:2009 a Shower Compartment suitable for wheelchair users should have at least the dimensions, equipment and fittings shown in the layout drawing on page 6.

### LAYOUT

If a building contains more than one Shower Compartment for wheelchair users, the opportunity should be taken to provide both left-hand and right-hand transfer layouts. The Intacare Doc M Shower Pack provides this facility in one standard pack without the need to specify right or left hand assemblies. Note: the drawing on page 6 illustrates a left handed layout, for right handed layouts this must be reversed.

### LANTAC CERTIFICATE

The LANTAC certificate scheme applies throughout England and Wales. In Scotland submission of the certificate may possibly provide Evidence of Compliance with Document M requirements. The LANTAC certificate should be detached and attached to the final approval request documents submitted to the Local Authority building inspectorate. The building inspector may then check that the layout installed is in accordance with the approval drawing as on the back of the certificate.

NOTE: The LANTAC certificate on page 5 is only valid if the pack contents are positioned in accordance with the layout drawing number SB/INTA/001 shown on page 6.

# PACK CONTENTS

## SHOWER VALVE AND KIT

Concealed Shower Valve

Diverter

Riser Rail, Hose, Handset, Elbow and Short Projection Overhead Shower

## SHOWER SEAT WITH BACKREST

Intacare Doc M Shower Seat

## RAILS

Intacare 600mm Support Rails (x 3)

Intacare 765mm Hinged Support Rail (x 2)

Intacare 450mm Support Rail (x1)

Robe Hook (x1)

## SHOWER RAIL & CURTAIN

1200mm x 1200mm Angled Shower Rail With Ceiling Support

1000 x 1200 Shower Curtain (x2)

## ADDITIONAL MANDATORY ITEMS NOT INCLUDED

Alarm Pull Cord With Two Red Bangles, Shelf & Facility for Limb Storage

## FIXING

It is essential that fixing instructions be followed, as the security of all items is vitally important. Walls onto which fittings are to be mounted must be suitable for the intended use of the applicable product. Appropriate fixings should be used which are suitable for the material of the fixing wall. For specialist fixings advise contact Fisher Fixings to ensure the correct fixings are used.

## SHOWER VALVE KIT & DIVERTER

Installation and maintenance instructions are enclosed with the shower valve and diverter.



## SHOWER SEAT

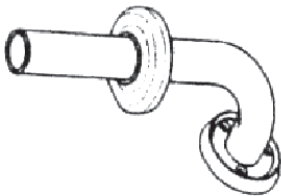
It is recommended that the seat be offered to the selected fixing position before drilling walls.

Ensure that the wall construction and fixings for the Shower Seat are capable of resisting the horizontal and vertical loads exerted by the users.

Fixings are not provided with the shower seat and advice should be sought from a proprietary fixing manufacturer such as Fisher Fixings as to the correct product for your wall construction.

With the seat in down position determine the correct height as detailed in the General arrangement drawing on page 6. Mark the fixing hole positions, ensuring the temporary timber brace supplied has kept the wall brackets square. Remove the brace when complete.

Once you are sure of the position drill holes to suit.



## GRAB RAILS

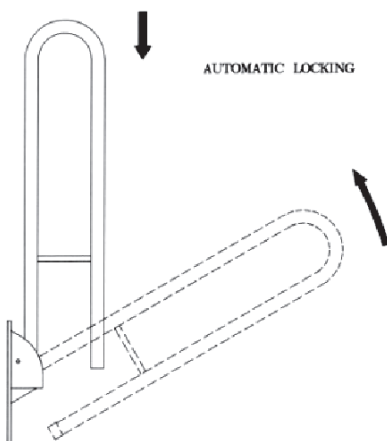
1. Ensure that the wall construction and fixings for the hinged support rails and grab rails are capable of resisting the horizontal and vertical loads exerted on them by the users.
2. Slide the flange cover away from the flange and offer to the wall.
3. Determine the position as detailed in the general arrangement drawing on page 6. Check alignment and mark the screw holes
4. Drill and plug the wall, using appropriate fixings (not supplied) for the wall structure. For specialist fixing advice contact Fisher Fixings to ensure that the correct fixings are used.
5. Secure the Rail into position.
6. Reposition the flange cover to conceal fixing screws.

## HINGED SUPPORT RAILS

Ensure that the wall construction and fixings for the hinged support rails and grab rails are capable of resisting the horizontal and vertical loads exerted on them by the users.

Offer the hinged arm to the wall at the correct height and location. Once sure of its position mark the fixing holes. Remove arm and drill and plug holes with appropriate fixings (not supplied) for the wall structure. For specialist fixing advice contact Fisher Fixings to ensure that the correct fixings are used.

Secure hinged arm to the wall.



## HOW TO RAISE THE HINGED SUPPORT RAIL

When not in use, the Hinged Support Rail is raised, leaving the facility i.e. shower clear for other users.

## HOW TO LOWER THE HINGED SUPPORT RAIL

To lower the unit from its upward/raised position, the Hinged Support Arm needs to be gently lifted from its locked status and then gently lowered into its horizontal position ready for use.

## SHOWER CURTAIN AND RAIL

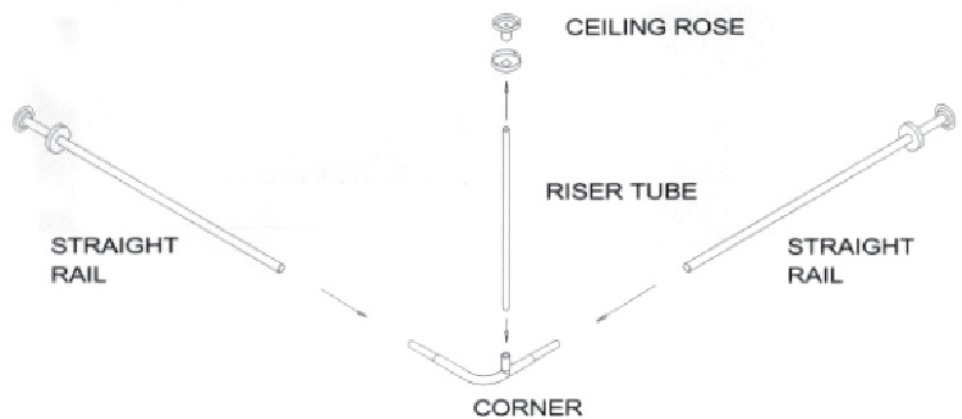
The curtain rail is supplied in sub-assembled parts, for final assembly in-situ.

Two curtains are provided for each side of the corner rail. Position the rail at such height, as required to suit the curtain, which has a 2m drop.

The fixing flanges have metal covers, which when the rail is fastened to the wall, locate in two slots and the cover is then twisted to fix its position.

The overall assembled size is 1200mm x 1200mm.

The vertical riser tube is supplied at 600mm long and should be cut to length to suit the ceiling height. It is fixed into the ceiling rose and the corner section using 4 off grub screws.



## CARE AND CLEANING INSTRUCTIONS

The products are designed to withstand the rigours of regular use provided reasonable care and cleaning is exercised.

The steelwork is coated with a baked polyester coating which is a durable, water resistant surface provided due care and attention is exercised.

Cleaning should be carried out regularly using a mild detergent, such as washing up liquid, and warm water and dried after cleaning and, or use.

**IT IS IMPERATIVE THAT NO HARSH, ABRASIVE CLEANERS ARE USED THAT COULD LIKELY BREAK DOWN THE WATER RESISTANT SURFACE FINISH.**

**SIMILARLY, THE USE OF ANY TOOLS OR SHARP INSTRUMENTS FOR THE INSTALLATION OF THE PRODUCTS SHOULD BE HANDLED WITH CARE IN ORDER THAT FABRICS OR COATED SURFACES ARE NOT DAMAGED.**



# SYSTEM APPROVAL CERTIFICATE

Certificate No. **457-5-0**  
Date: **18 June 2009**

**1 Certificate Holder**

Name: Intatec Limited  
Address: Airfield Industrial Estate, Hixon, Staffs ST18 0PF  
Telephone: 01889 207200  
Email: [stuart.blairs@intatec.co.uk](mailto:stuart.blairs@intatec.co.uk)

**2 System Title**

Description: Intatec Doc M Shower Pack

**3 The system has been assessed on the following drawings and documents:**

**Extent of Recommended Regulatory Approval**

Part M - Yes, as title of System

**Limitations of Use**

None

**Drawings/Documentation**

Drawing No - SB/INTA/001 (Dated 5/5/09)  
Doc M Pack Contents list

**4 Assessment**

The design and method of construction of the system designed in (2) above has been examined and as far as it has been shown has been found to be capable of complying with current Building Regulations.

**5 Conditions of Certification**

1. The design shown and the materials specified shall not be changed without reference to the local authority responsible for certifying the system.
2. The certificate shall be valid for three years or until invalidated by formal notice.
3. Where reference is made on a plan to any Code of Practice, British Standard or manufacturer's instruction it shall be construed as a reference to such publication in the form in which it is in force at the date of this certificate.
4. This certificate should not be regarded as a formal approval under the Building Regulations.

**6 Authority**

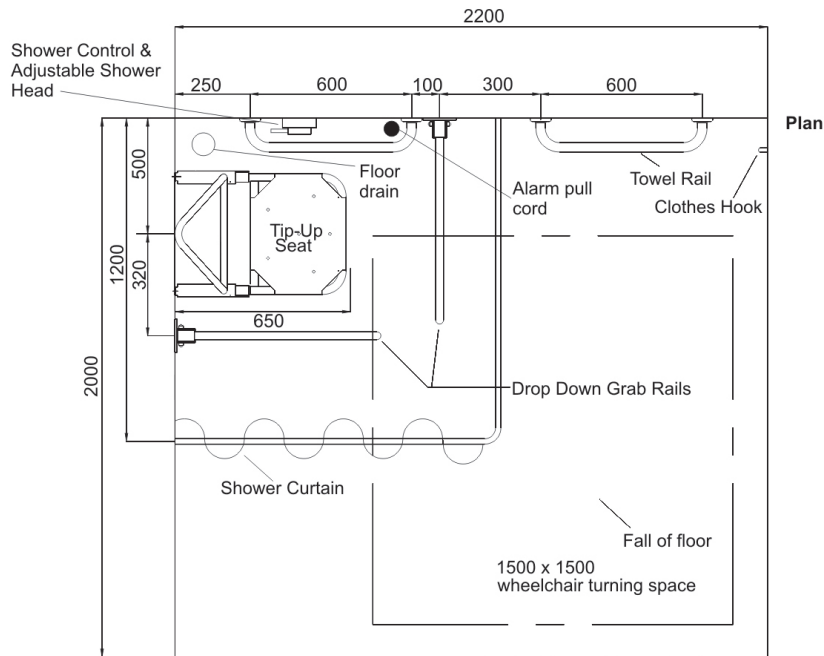
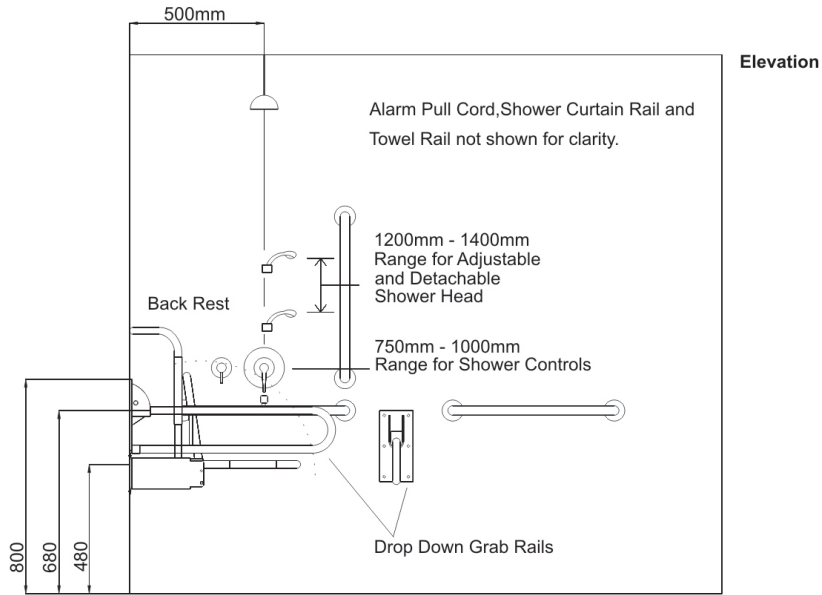
This system approval certificate is authorised by:

Name: Mr Andrew Turner

Signature: 

On behalf of: Staffordshire Moorlands District Council

A SERVICE OF LABC



**Mandatory Additional Items**

Shelf and Storage Space must be provided (not supplied)

