

Doc M Low Level WC Pack

Introduction

The Inta Doc M WC packs complies with the approved Document M of the Building Regulations and BS8300:2018. The Inta Doc M WC packs provides both left and right hand layouts without the need to specify right or left hand assemblies*

*NOTE. The drawing on page 3 illustrates a left hand layout, for right hand layouts this must be reversed.



- Complies with document M of the Building Regulations and BS8300:2018
- Close coupled and Low level packs available
- TMV3 approved packs available
- Operating pressure range of 0.1 to 5 bar
- Available with white, blue or grey rails

Product Range

Description	Finish	Code No.
Doc M 6Ltr low level WC pack with white rails	White	DM600WH
Doc M 6Ltr low level WC pack with blue rails	Blue	DM600BL
Doc M 6Ltr low level WC pack with grey rails	Grey	DM600GR
* Doc M 6Ltr low level WC pack with white rails & TMV3 approved basin Tap	White	DMX600WH
* Doc M 6Ltr low level WC pack with blue rails & TMV3 approved basin Tap	Blue	DMX600BL
* Doc M 6Ltr low level WC pack with grey rails & TMV3 approved basin Tap	Blue	DMX600GR
* Doc M 6Ltr low level WC pack with white rails & TMV3 approved mixing valve	White	DM600WH3
* Doc M 6Ltr low level WC pack with blue rails & TMV3 approved mixing valve	Blue	DM600BL3
* Doc M 6Ltr low level WC pack with grey rails & TMV3 approved mixing valve	Blue	DM600GR3

Note: TMV3 approval applies to packs marked * only



Doc M Low Level WC Pack

■ Pack Contents

■ **WC SUITE**

Low Level HO Pan
6ltr Close Coupled Cistern & Spatula Lever
Seat Ring and Hinges

■ **BASIN**

450mm Basin - 2 Tap Holes
1 1/4" Basin Waste
Lever Operated Sequential Basin Mixer Tap
Bottle Trap
Wall Fixing Brackets
Tap hole stopper

■ **RAILS**

600mm Support Rails (x 5)
Hinged Support Rail with Toilet Roll Holder (x 1)

■ **ADDITIONAL MANDATORY ITEMS NOT INCLUDED**

Alarm Pull Cord With Two Red Bangles, Shelf & Facility for Limb Storage
Mirror 400mm wide x 1000mm high fixed at a height of 800mm from the floor to the bottom edge

■ **FIXING**

It is essential that fixing instructions be followed, as the security of all items is vitally important. Walls onto which fittings are to be mounted must be suitable for the intended use of the applicable product. Appropriate fixings should be used which are suitable for the material of the fixing wall. For specialist fixings advise contact Fisher Fixings to ensure the correct fixings are used.

■ **WC**

Plugged and screwed to the floor (fixings not supplied)

■ **Cistern**

Wall Brackets plugged and screwed to the wall (fixings not supplied)

■ **Basin**

Mounted on brackets provided using suitable fixings (fixings not provided)

■ **Basin Mixer Tap**

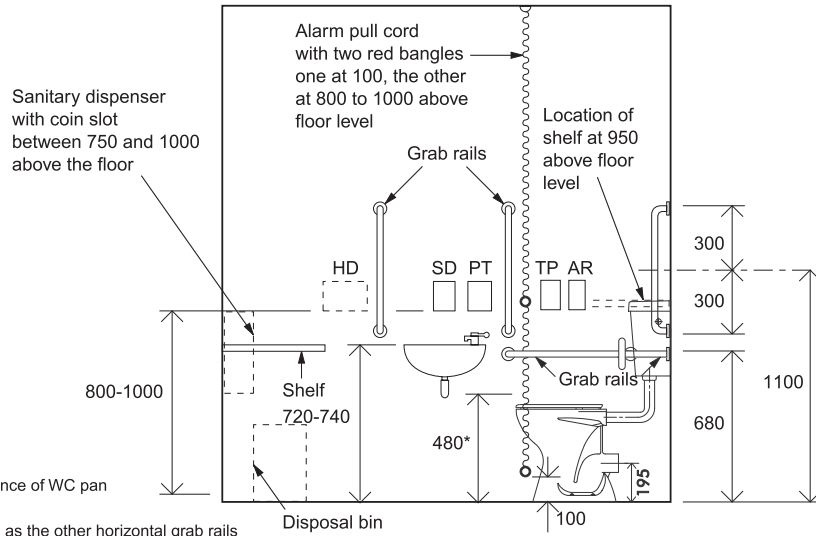
Lever operated Basin Mixer tap
Intatherm Thermostatic Basin Mixer Tap TMV3 (DMX600WH, DMX600BL & DMX600GR only)

■ **Thermostatic Mixing Valve**

Intamix TMV3 approved 15mm Thermostatic Mixing Valve (DM600WH3, DM600BL3 & DM600GR3)



Doc M Low Level WC Pack

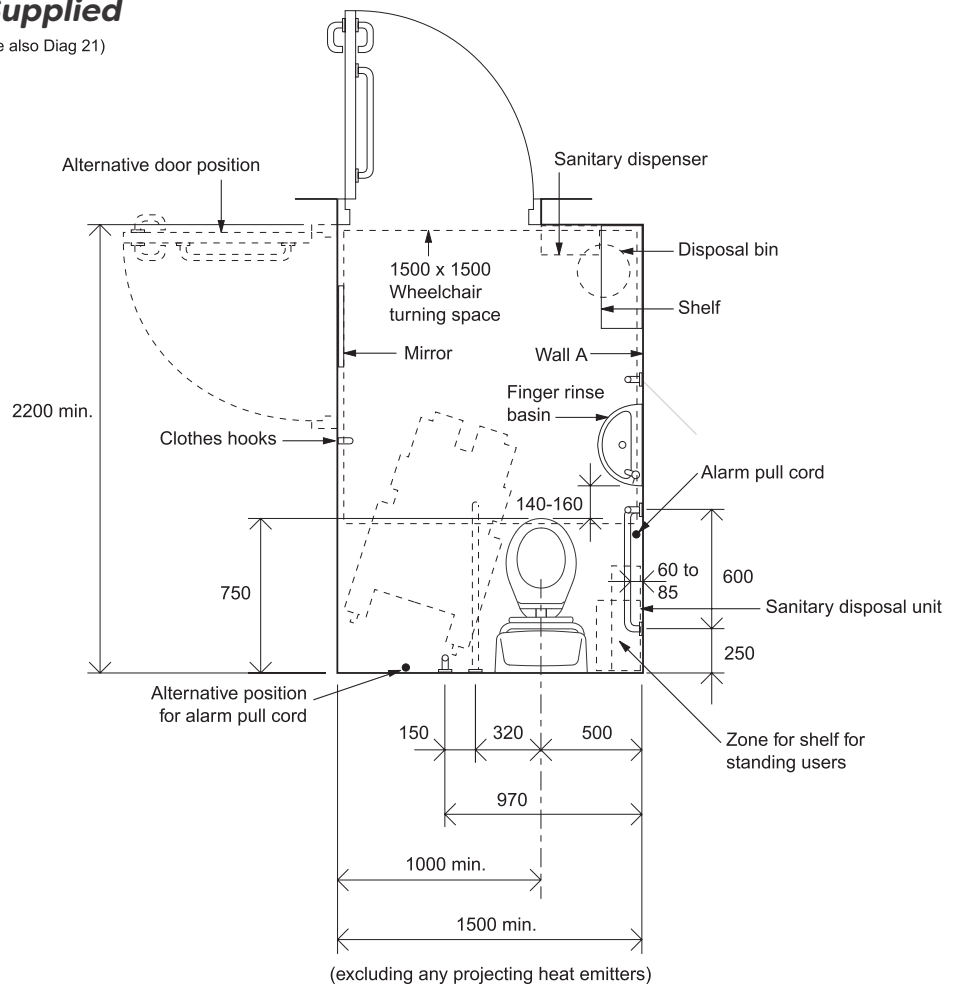


*Height subject to manufacturing tolerance of WC pan

Height of drop-down rails to be the same as the other horizontal grab rails

Additional Items - Not Supplied

- HD: Possible position for automatic hand dryer (see also Diag 21)
- SD: Soap dispenser
- PT: Paper towel dispenser
- TP: Toilet paper dispenser
- AR: Alarm reset button



Note
Layout for right hand transfer to WC

